

The Ohio State University

# Early Head Start Partnership Program

2022 - 2023 ANNUAL REPORT



**EHS-CC**  
EARLY HEAD START  
CHILD CARE



**THE OHIO STATE  
UNIVERSITY**  
SCHOENBAUM FAMILY CENTER

## DIRECTOR'S MESSAGE



Last year, The Ohio State University Early Head Start Partnership Program reached more infants and toddlers than ever before, and we have witnessed the positive impact our initiatives have had on their lives.

Year two into our \$10 million federal expansion grant, we continue to improve the well-being of at-risk families through a holistic approach to wellness that includes quality early education, children's physical and mental health, social-emotional awareness, and economic stability. We do this through a diverse lens that celebrates the similarities and differences of the communities we serve so that all children are included and valued for who they are.

To that end, our staff of family specialists have worked tirelessly to ensure that infants and toddlers and their families receive the care, connections and essential resources they need. The efforts of our home visitors and prenatal educator have helped families navigate the challenges of educating their children from home and supported pregnant women throughout their pregnancy to deliver a healthy baby.

Since 31% of children enrolled in Early Head Start received developmental or behavioral support last year, our team of multidisciplinary specialists has worked to raise awareness among parents and providers for early intervention services. These services help children make progress toward achieving age-appropriate milestones, academic readiness, and social-emotional development. Alongside these specialists, education coaches are a constant presence in EHS classrooms. They practice with teachers to enhance their skill sets, build equitable learning spaces, improve their student interactions, and create play-with-purpose environments.

We also include our parents and teachers in our work, learning from their adversities, celebrations and life experiences. They are an important part of the program's success through their service on advisory boards and committees, and volunteering through family engagement activities. Our goal is to empower caregivers to lead with their voices and be their child's first advocate and teacher.

Over the past year, EHS staff advocated for expanding access to early childhood education, lowering child care costs for caregivers, and improving working conditions for early educators who support at-risk children and their families. Through the expertise of new and longstanding partners, we will continue to put infants, toddlers and their families at the center of all we do to promote a healthy early start in life and encourage safe and nurturing relationships.

As we celebrate our milestones and look ahead, we are reminded that our collective good is driven by strong university and community partners, passionate early childhood educators, and dedicated governing board, and parent led policy council. Your efforts shape our many accomplishments and make it possible for us to achieve the equitable outcomes we work towards for all young children. We are truly grateful for your unwavering support.

**Sherrie Sutton, M.S.Ed., LPCC**

Director, The Ohio State University Early Head Start Partnership Program

# About

## Mission

Through robust partnerships with university and community agencies, we improve the quality of early childhood education and comprehensive services for infants and toddlers in Columbus' most vulnerable neighborhoods.

## Vision

To ensure that all caregivers engage their children in lifelong learning while strengthening their stability, economic outcomes and well-being.

## Goals

- Increase opportunities for parents to become partners to encourage greater involvement in the program and their child's learning
- Maintain existing community and university partners to provide high-quality comprehensive services as well as identify any gaps to leverage new partnerships
- Create a professional development framework based on developmentally appropriate educator best practices to enhance classroom quality and student achievement
- Implement data-driven decision-making for continued quality improvement and growth

## Program

Early Head Start provides multiple options to meet the needs of our Columbus families:

- 15 center-based programs offer 173 children birth to three classroom care in high-quality education environments
- 11 family child care professionals provide the nationally recognized Early Head Start model in private homes for 35 children
- Home visiting services bring staff to 30 families (at any given time) to support child development through weekly 90-minute home visits and bi-monthly group social activities
- Prenatal education offered to 25 pregnant mothers (at any given time) provide information and support during pregnancy and six weeks after giving birth



421

children and families served



239

well-child checks




239


vision screenings, exams



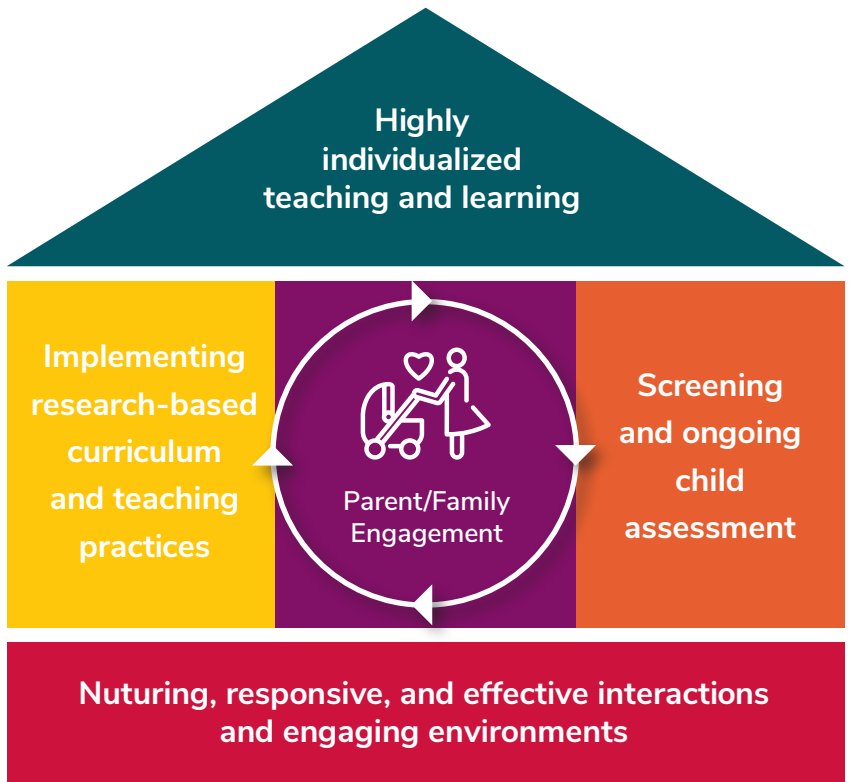
**242**  
dental  
screenings,  
exams



**241**  
hearing  
screenings,  
exams



**0%**  
EHS infant  
mortality rate



### Framework

Head Start’s National Center on Quality Teaching and Learning supports school readiness for all children. The framework represents four integral elements of quality teaching and learning: engaging in everyday interactions with children, choosing and implementing a strong curriculum, using regular assessment of children’s skills and individualized teaching. These elements correspond to parts of a house including the foundation, two pillars, and a roof. When connected, they form a single structure that fosters children’s learning and development.



### Center

As a lead community program located within the College of Education and Human Ecology’s Schoenbaum Family Center, Early Head Start and Crane Center for Early Childhood Research and Policy partner in research, practice and policy to improve the well-being of young children. The Schoenbaum and Crane Centers also serve as a training ground for Ohio State students studying early care and education.

# Engaging Families

## Family socializations

Last year marked our second year of providing home visiting services to 30 enrolled families to support child development through weekly 90-minute home visits and bi-weekly group social activities. EHS hosted 22 “Play and Learn” socialization groups for 250 participants at Columbus libraries and parks where children and their families interacted with each other through intentional and engaging play activities while building their social networks. When families are connected to their communities, children are more likely to enter school ready to succeed.

## Continuum of care

A healthy pregnancy has a lasting influence on a child's health and development. EHS Prenatal Educator Jennifer Cheeks spent last year supporting pregnant mothers with education about healthy fetal development, importance of attending doctor appointments, healthy heating habits, risks of dependencies, benefits of breastfeeding, postpartum information, and safe sleep during 526 contacts and visits. She also met with over 20 community organizations to encourage program enrollment and discuss the importance of father engagement during pregnancy and early childhood.

## Connecting during digital times

EHS increased family access by improving convenience and flexibility for families through the development of a QR-code on classroom flyers and refrigerator magnets. This allowed families to easily report how many minutes they spent on curriculum activities that supported parent-child relationships and child development. The digital option doubled parent participation within a month of its release. The successful program was developed by Data and Compliance Manager, Jessica Woodruff who was invited to present the initiative at the 2023 National Head Start Conference.

## Multisensory approach to learning

EHS teamed up with the Columbus Metropolitan Library and Future Ready to distribute 500 literacy kits to families. Literacy experts designed the kits to teach literacy skills and to make reading fun for early learners from birth to age four. Each kit focused on a specific theme and included board books, finger puppets, crayons, games and other engaging activities for parents and caregivers to share with their child.



## School Readiness GOALS

The Head Start Approach to School Readiness means that children are ready for school, families are ready to support their children's learning, and schools are ready for children.

**Domain:** Approaches to Learning

**Goal:** Children will make discoveries and initiate learning on their own

**Domain:** Social & Emotional Development

**Goal:** Children will engage in positive relationships with adults and peers

**Domain:** Language & Literacy

**Goal:** Children will participate in shared interactions with others

**Domain:** Cognitive

**Goal:** Children will use appropriate skills to solve problems

**Domain:** Perceptual, Motor and Physical Development

**Goal:** Children will develop motor skills to participate in self-care routines



34,844  
volunteer parents  
hours

“Tooth decay is the most common chronic disease among children in the United States. Untreated cavities in young children can cause pain and infections that may cause problems with eating, speaking, and playing. Our early intervention of preventative dental services helps promote optimal oral health which leads to better learning, behavior, and social interactions at home and in the classroom.”

**Amy Baer, RDH, BA**  
Project Coordinator, Community  
Wellness, Department of Dentistry  
Nationwide Children’s Hospital



## Sharing Best Practices

### Lessons from the pandemic

EHS Principal Investigator and Director of Ohio State’s Child Care Center, Donald Fuzer was one of only six national experts asked to present at the Bipartisan Policy Center’s panel series highlighting the promising work Early Head Start-Child Care Partnership Programs provide related to pandemic recovery and stabilization. Fuzer spoke on how Ohio State’s program helps local communities stabilize child care partners, expands access to mental health and comprehensive services for children and families, and strengthens workforce development and retention. The Bipartisan Policy Center is a Washington D.C. non-profit organization that ensures policymakers work across party lines to craft bipartisan solutions.

### Leading from home

Trina Averette, EHS Family Child Care Professional and Ohio State Representative for the National Association of Family Child Care was a panelist for Groundwork Ohio’s Center for Early Learning webinar entitled, “Leading from Home.” Experts explored the value family child care brings in Ohio as well as the challenges faced by providers.



### Mixed-income model benefits

A. Sophie Rogers Principal Anneliese Johnson and Vice Principal Samantha Peterson were selected to present at the International Association of Laboratory Schools conference in Toronto, Canada where they highlighted the educational benefits of the school’s mixed-income model. They demonstrated how this model fosters a diverse community of learners. They also discussed the crucial role of university partners in providing necessary support to families and ways in which they braid funding streams to promote financial accessibility to early education for all families, regardless of income.

# University and Community Partners

Ensuring that infants and toddlers have equal access to early childhood education and comprehensive services takes more than one organization. That's why the heart of our unique model is a strong collaboration with many partners. During 2022-2023, these agencies provided vital services to EHS families and child care providers:

**Action for Children** – assists families with finding child care, offers training to providers, and assists family child care providers pursuing Step Up To Quality rating

**CelebrateOne** – facilitates city-wide community events with opportunities for EHS families

**Center for Healthy Families** – provides comprehensive services for pregnant and parenting teens, refers clients to EHS

**Children's Hunger Alliance** – assists family child care providers in meeting the nutrition requirements for Ohio Healthy Programs designation

**Columbus Metropolitan Library** – provides space for EHS play & learn groups at various library locations

**Community Properties of Ohio** – provides subsidized housing and supportive services to their residents including referrals to EHS programs

**Columbus Recreation and Parks** – offers socializations and family-friendly programming to EHS families

**Directions for Youth and Families** – provides social workers who recruit, enroll and offer support to EHS families by connecting them to community resources such as housing stability, workforce development, continued education and financial security

**Franklin County Department of Job and Family Services** – assists families in applying for publicly funded child care, provides training for EHS directors, partners and staff to support families

**Franklin County Family and Children First, Help Me Grow Early Intervention** – assesses children with developmental concerns and help families find a successful learning environment for their child

**Linden McKinley STEM Academy** – works with EHS to offer on-site, prenatal education to high school students

**Moms2B** – refers pregnant mothers to EHS services

**Nationwide Children's Hospital Community Wellness Initiatives** – provides well-child checks, immunizations and sick visits through Primary Care Centers and mobile unit visits at EHS child care centers

**Nationwide Children's Hospital Dental Clinic** – provides EHS children with complete dental exams along with parent oral health education

**Ohio State Community Care Coach** – provides prenatal appointments for pregnant mothers

**Ohio State College of Education and Human Ecology** – places undergraduate students in EHS classrooms to help them gain classroom experience

**Ohio State College of Nursing** – provides children's clinical medical record review

**Ohio State Department of Speech & Hearing** – provides EHS children with hearing exams and follow-ups.

**Ohio State Nisonger Center** – provides developmental screenings and early childhood mental health assessments for enrolled infants and toddlers; serves as a child development resource and supports families through the referral and evaluation process

**Ohio State College of Optometry** – provides EHE children with comprehensive vision exams and glasses

**Quantum Health (Employee Resource Group, Quantum Black Voices)** – supports EHS families through community service events, program volunteering, donation drives, and in-kind support

**Star House** – serves as a drop-in center for homeless teens, offers education, employment, and wellness services, and refers clients to EHS resources

**YCares** – works with pregnant families and those who have infants under the age of one, refers eligible caregivers to EHS prenatal services

**Youth Build Columbus Community School** – serves high school students who wish to receive their diploma while earning certifications and learning technical skills, refers students to EHS programs

# The Power of Partnerships

## Enhanced provider training

Our partnership with Children’s Hunger Alliance provided EHS family child care professionals with the Ohio Healthy Program designation over the past year. This program offers training and technical assistance to educators to create healthy habits, menus, policies, and family engagement activities to address childhood obesity.

## Nestled in nature

Research shows when children play and learn in nature, they do so with more engagement, imagination, and cooperation than in artificial environments. To that end, Kid’s Care Academy along with support from EHS and volunteers from Quantum Health Black Voices (an employee resource group at Quantum Health) created an outdoor playground for the child care center. The new landscape includes a slide, rock climb, stream, trees, and stumps and logs, in an open, natural play space



## The faces of FACCES

The 2022 Faces of The Family Adolescent & Child Community Engagement Service (FACCES) event held in February celebrated families and community partners. Families shared their firsthand experiences and successes from utilizing services under the FACCES Starting Point Family Center hub. Supporters were highlighted for their incredible work and for collaborating to uplift community families. The year round, free drive-thru fresh market offers produce and access to healthy food for families. Volunteers deliver the urban garden groceries to families within a 10-mile radius of the hub.

## Expanded care

Ohio State’s Department of Speech and Hearing expanded its services to include hearing exams at home visiting family socializations at downtown libraries. This is where caregivers get to know each other, and children play and make new friends. This model allows us to offer these important exams during the year at convenient central locations while making the best use of clinical faculty and graduate student time.

## Giving back

Many EHS caregivers experience hygiene poverty; the inability to afford critically needed personal care items for themselves or their families. To help, Quantum Health Black Voices hosted a donation drive to collect classroom books and personal care items for EHS families. Staff donated diapers, wipes, hygiene items, and over 430 children’s books totaling nearly \$10,000 in in-kind support. Due to the group’s efforts, EHS classrooms added diverse books to their libraries that reflect our families.







"My EHS education coaches are wonderful mentors. They answer questions I have regarding family support. They nurture me mentally and emotionally. They give me ideas on how to work best with other teachers and how I can encourage them. Our EHS parents are very glad that this program exists because, without it, they feel their child would not get a high-quality education."

– Claudia Ellerbrock, teacher  
A. Sophie Rogers School for Early Learning



### Brighter smiles

The Delta Dental Foundation donated oral health supplies including infant, toddler, adult toothbrushes, toothpaste, and floss to EHS providers and families. Multi-language educational brochures (including one dedicated to helping autistic children with oral care), classroom charts, posters, and coloring books were also provided. Last year, EHS spent over \$4,500 on oral healthcare items. This generous donation helped stretch program dollars for other needed items. To celebrate National Children’s Dental Health Month, EHS distributed dental kits to providers and families in February.



### Community collaboration

In the spring, EHS teamed up with city partners to promote the program and recruit for enrollment. EHS home visitors and prenatal educator engaged with families experiencing homelessness and pregnant moms at the YMCA Van Buren Center Emergency Shelter, CelebrateOne Westside Baby Shower, and families supported by Community Properties of Ohio. These partnerships with like-minded organizations help us identify common goals, align resources, and share data for continuous improvement.



Child Care

# PROVIDERS

## Centers

- Chosen Kids 3,\* – 4 stars
- Columbus Early Learning Center – Alum Creek \*
- Columbus Early Learning Center – Champion, 5 stars
- Columbus Early Learning Center – Main, 5 stars
- Creative Child Care – East, 5 stars
- Creative Child Care – North, 5 stars
- Creative Child Care – West, 5 stars
- Fresh Start, 5 stars
- YMCA Future Scholars Learning Center, 5 stars
- Heavenly Kids, 5 stars
- Kiddie Academy of KIPP Columbus, 5 stars
- Kid’s Care Academy, 5 stars
- A. Sophie Rogers School for Early Learning, 5 stars
- SproutFive, 5 stars
- Starting Point, 5 stars

## Family Child Care Professionals

- Trina Averette, 5 stars
- Rhonda Brown-Daniels, 5 stars
- Diane Burton-Horton, 3 stars
- Kiara Dickerson, 0 stars
- Liz Gayle, 5 stars
- Brittany Glen, 3 star
- Esther Jefferson-Moore, 5 stars
- Marcia Jones, 3 stars
- Cheryl Odom, 5 stars
- Lori Whaley, 1 star
- Lori Wilson, 5 stars

*\*new providers in 2022-2023*



# 88%

of providers have a 3-star or higher rating (1-5 scale)



**As a requirement of the award, EHS was responsible for generating \$1,172,347 in in-kind donations last year. This included parent volunteer hours, classroom books, diapers and supplies for providers, and services provided by university and community partners.**

# Teacher Support & Development

## Dedicated child development and behavior support

Last year, 31% of children enrolled in EHS received targeted developmental or behavioral intervention support. EHS Education Coaches partnered with Ohio State Nisonger Center's multidisciplinary staff to directly support teachers' use of effective teaching practices and implementing individualized experiences that are responsive to each child's interests, strengths, and needs. The on-site active coaching helped identify children who may have developmental and behavioral concerns by helping educators and caregivers with various strategies including intentional modeling, support plan or referral for further evaluation and services with partners Help Me Grow Early Intervention, Franklin County Board of Developmental Delays, and local school districts.



## Teacher training

Over the past year, EHS expanded its classrooms in a number of child care centers, increasing new opportunities for additional training and teacher support. Trainings are planned and created in collaboration with EHS partners and providers to enhance the knowledge and skills of classroom teachers. Shaun Barrett, Senior Behavior Support Specialist and EHS Child Development Specialist, provided professional development to nearly 55 Creative Child Care Inc. educators on challenging classroom behaviors. Barrett also engaged with 20 teachers at Columbus Early Learning Centers on the importance of serve and return communication with children increasing responsive interactions to help them build a strong language foundation in early brain development.



## Online learning system for educators

A new online content delivery system helps EHS educators meet state requirements and receive quality training. ProSolutions offers over 200 courses on 30 topics are available in English and Spanish including required EHS health & safety training. Teachers have the flexibility to complete CDA coursework and professional development specific to infant and toddler classrooms, and are home visiting and director level.

## Expanded resources

The Crane Center's Read It Again! curriculum supplement was expanded last year through several partnerships. To date, 5,275 early childhood centers and family child care educators throughout Ohio have received a set of storybooks, and over 1,000 early childhood professionals have completed the Read It Again! Training. The free curriculum focuses on building phonological awareness, print knowledge, vocabulary skills for infants, toddlers and preschoolers.



2,778

personal or virtual contacts with families



113,763

diapers distributed to providers and families



**"Two of my three boys have been enrolled in the EHS program. As part of the Home Visiting program, my family looks forward to the bi-monthly play and learns. They are an awesome time for families to get to know each other. Each week, Miss Angela coaches me in play-with-purpose activities with my children at home. She brings out their creativity and is very supportive of my husband Justin's role as a father. She has strengthened my skills as a mom and teacher. She attends milestones in our lives and even checks on us when the boys are sick. Being part of EHS was one of the best decisions I have made."**

**– Maria Russell**  
EHS Home Visiting parent

# A Focus on Equity

## Representation matters

EHS continued a second successful year with our monthly book highlights celebrating culturally diverse and racially affirming books with teacher and family friendly activities. The series provides important discussion prompts for families to begin these essential conversations early in life. Education coaches introduced 12 new book titles to 25 EHS teachers and classroom libraries.

Early childhood is the ideal time to begin emphasizing the importance of diversity, equity and inclusion. Creating an anti-bias curriculum exposes children to meaningful conversations, discussions, and learning experiences that build acceptance and their sense of self. Over the past year, EHS committed to broadening our focus to include language in our mission and goals that encompass these values.

## Accessibility access

To adhere to the university's digital accessibility policy, a new Schoenbaum Family Center website was launched including an updated community page highlighting EHS programs and resources to support our providers and families. The EHS site is now accessible to those who speak Nepali, Somali, and Spanish.

## Culturally aware classrooms

In February, EHS Education Coaches Stacy Orbaker and Latoya Jackson led a 3-hour anti-bias training for educators at Gahanna Special Needs Preschool. They discussed anti-bias curriculum as an approach to early childhood education that supports respecting and embracing differences and acting against bias and unfairness. Teachers learned ways to create a safe, supportive classroom to help their students develop self-awareness, confidence, family pride, and positive social identities.

To celebrate Black History Month, The A. Sophie Rogers hosted Haitian American renowned children's book author, Debbie Riguad. Riguad welcomed families into the vibrancy of Haitian culture with stories and songs. This special event highlighted the importance of cultural diversity and inclusion in early learning.



88%

of EHS children are children of color

---

## OUR TEAM

**Jennifer Cheeks**  
Prenatal Educator

**Michelle Dunlap**  
Grant and Fiscal Manager

**Don Fuzer**  
Principal Investigator

**Latoya Jackson**  
Education Coach

**Angela Martin**  
Home Visitor

**Molly McCaw**  
Home Visitor

**Stacy Orbaker**  
Education Coach

**Joppa Person**  
Home Visitor

**Sherrie Sutton**  
Director

**Melanie Tracy**  
Service Integration and  
Marketing Coordinator

**Lisa Welsh**  
Education and Community  
Program Manager

**Jessica Woodruff**  
Data Analytics &  
Compliance Manager

**Erin Woodson**  
Data and Project Coordinator

---

## OUR BOARD

**Yolanda Burgess, Chair**

Former OSU EHS Parent, Executive Assistant, SPPlus Corporation

**Bernadette Melnyk, PhD, APRN-CNP, FAANP, FNAP, FAAN**

OSU Vice President for Health Promotion, University Chief Wellness Officer,  
Dean and Helene Fuld Health Trust Professor of Evidence-based Practice, College of Nursing

**Pat Bebo, M.S.**

OSU College of Education and Human Ecology Assistant Dean for Outreach and Engagement,  
OSU Assistant Director for Family and Consumer Sciences

**Susie Breitenstein, PhD, RN, FAAN**

OSU College of Nursing Associate Professor, Director, Community Outreach and Engagement

**Melissa Johnson, BA**

Vice President, Cameron Mitchell Premier Events and Community Relations, OSU Adjunct  
Faculty, Hospitality Management

**Elena Moore, MSW**

Licensed Social Worker, OSU East Hospital

**Obie Stillwell, BA**

Former OSU Football Player, local television and community personality

**Andrew Wapner, DO, MPH**

OSU Assistant Clinical Professor, Director, Center for Public Health Practice, Director,  
Master of Public Health Program for Experienced Professionals



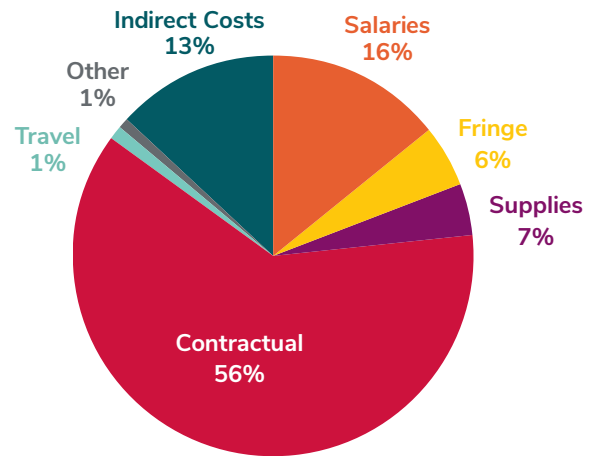
# 2022-2023 Budget

## Early Head Start

### Budget FY23

Salaries	\$811,176
Fringe	\$284,723
Supplies	\$384,421
Contractual	\$2,860,279
Travel	\$32,670
Other	\$72,209
Indirect Costs	\$666,822
Total Direct	\$4,445,478

**TOTALS** **\$5,112,300**

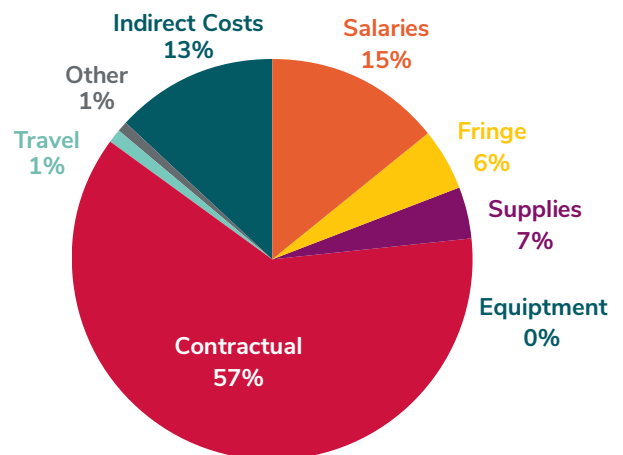


## Early Head Start

### Expenses FY23

Salaries	\$774,705
Fringe	\$292,053
Supplies	\$372,307
Contractual	\$2,895,925
Equipment	\$1,350
Travel	\$51,399
Other	\$34,069
Indirect	\$663,271
Direct	\$4,421,809

**TOTALS** **\$5,085,080**



Object Class Categories	Operations	Training & Technical Assistance	Non-Federal Share	Total
Salaries	\$794,966	\$16,210	-	\$811,176
Fringe	\$279,033	\$5,690	-	\$284,723
Travel	\$17,250	\$32,670	-	\$49,920
Supplies	\$383,528	\$893	-	\$384,421
Contractual	\$2,852,279	\$8,000	\$1,278,075	\$4,138,354
Other	\$26,254	\$28,705	-	\$54,959
Direct Costs	\$4,353,310	\$92,168	\$1,278,075	\$5,723,553
Indirect Costs	\$652,997	\$13,825	-	\$666,822
<b>TOTALS</b>	<b>\$5,006,307</b>	<b>\$105,993</b>	<b>\$1,278,075</b>	<b>\$6,390,375</b>

**Audit opinion on each major federal program:** An Independent Auditor's Report, submitted through the Office of Sponsored Programs by Klynveld Peat Marwick Goerdeler (KPMG) concluded that The Ohio State University complied, in all material respects, with the types of compliance requirements referred to in the OMB Uniform Guidance that could have a direct and material effect on each of its major federal programs for the year ended June 30, 2023. The program received \$297,499 in start-up funds.

The Ohio State University

# Early Head Start Partnership Program

175 E 7th Ave, Columbus, OH 43201

614-292-7680

[go.osu.edu/ehs](http://go.osu.edu/ehs)



**EHS-CC**  
EARLY HEAD START  
CHILD CARE



**THE OHIO STATE  
UNIVERSITY**

SCHOENBAUM FAMILY CENTER